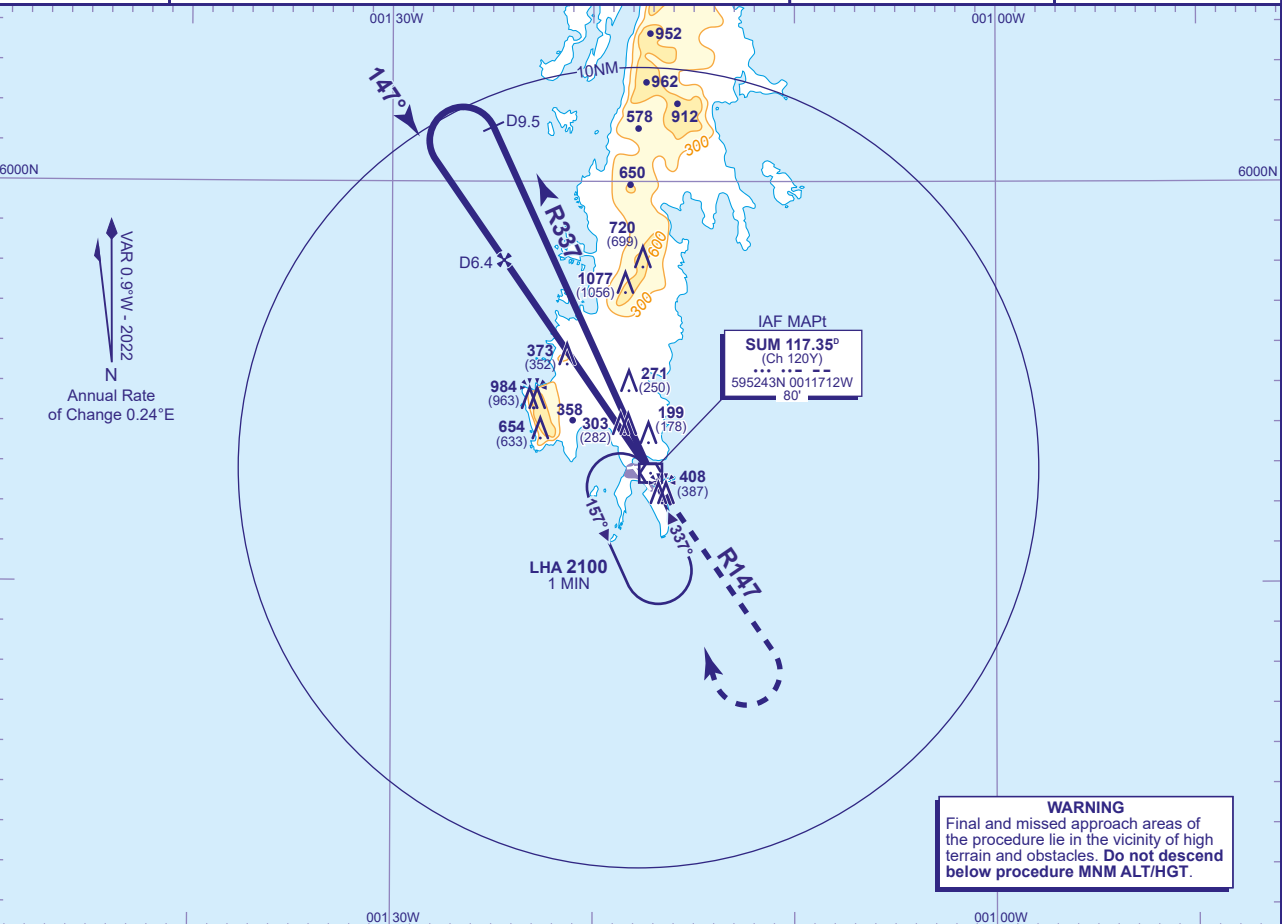


INSTRUMENT APPROACH CHART - ICAO

SUMBURGH  
VOR/DME 147°  
TO AERODROME  
(ACFT CAT A,B)

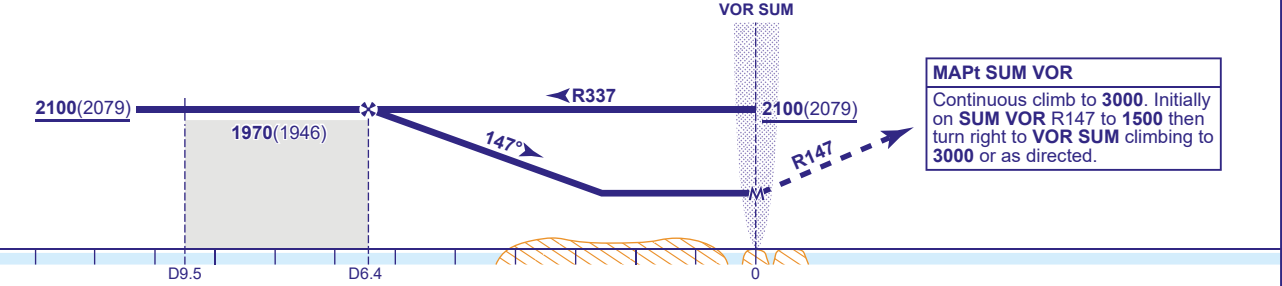
<div><div>MSA</div><div><div>24</div><div>090°</div><div>21</div></div><div>VOR SUM</div></div>	TWR	118.255	SUMBURGH TOWER	AD ELEVATION	21
	RAD	131.300, 123.155	SUMBURGH RADAR		
	ATIS	125.855	SUMBURGH INFORMATION	OBSTACLE ELEVATION	1077 AMSL (1056) (ABOVE THR)
	AFIS	118.255	SUMBURGH INFORMATION	BEARINGS ARE MAGNETIC	

TRANSITION ALTITUDE  
6000



RECOMMENDED PROFILE Gradient 5.22%, 317FT/NM				
SUM DME	6	5	4	3
ALT(HGT)	1850(1829)	1540(1519)	1220(1199)	900(879)

Arrival **not below MSA**. Shuttle in hold as necessary.



Aircraft Category		A	B	Rate of descent	G/S KT	160	140	120	100	80
OCA (OCH)	APPROACH TO VM(C)				FT/MIN	850	740	630	530	420
VM(C)OCA (OCH AAL)	Total Area	860(839)	1200(1179)							
	Restricted (See Note)	860(839)	860(839)							

**AIRCRAFT UNABLE TO RECEIVE DME**  
Fly outbound on base turn procedure for 3MIN then turn left to establish on the FAT.

**NOTE** Reduced VM(C) minima applies to aircraft which manoeuvre outside the quadrant north of RWY 09/27 C/L and west of RWY 15/33 C/L.

CHANGE (13/23): VOR/DME SUM RECALIBRATED. RADIALS. CHART TITLE.